



User Manual & Assemble Guide

+ 18 Years



Congratulations on your purchase of the Electric Citycoco Scooter .

This manual contains important safety, operational and maintenance information. Please read this manual carefully prior to riding so that you will understand how to operate your scooter safely, understand its capabilities and limitations and become aware of all operations and features.

Any person operating or riding as a passenger on your scooter should carefully read and fully understand the entire contents of this manual prior to riding the scooter. For your safety, follow all safety warnings contained within the owner's manual and the labels applied to your scooter. You should always keep this manual in your scooter, and it should be considered a permanent part of the scooter.

The efficiency and longevity of your scooter will depend heavily on your operating methods and periodic maintenance. Failure to operate and maintain your scooter as instructed in this owner's manual may void the limited warranty and reduce the efficiency and reliability of your scooter.

The first 500 miles are the most important in the life of your scooter. Proper break-in during this time will ensure maximum life. Please refer to the break-in section for specific break-in procedures prior to riding.

If you have any questions, please ask your dealer for assistance.

Product Introduction:

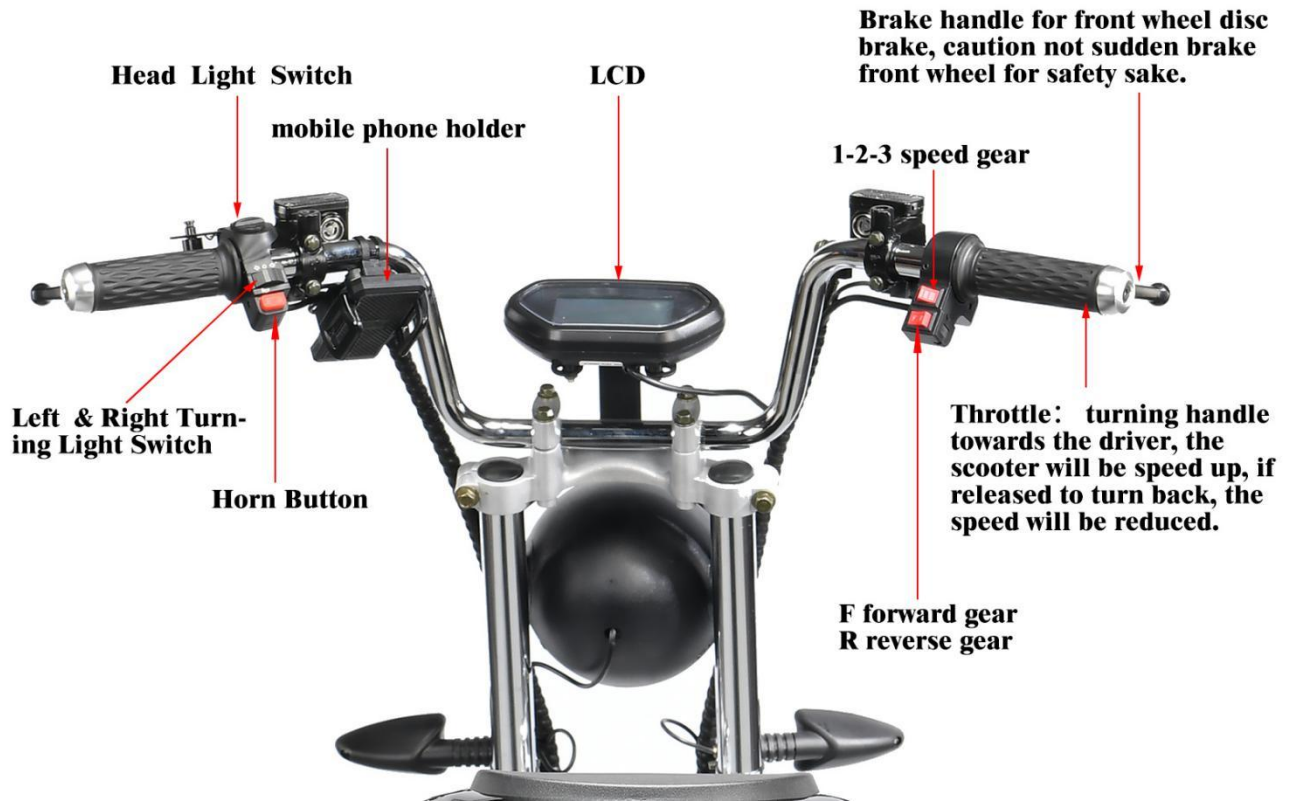
A: Technical Parameter:

1. Motor Type: Differential motor motor 60V 3000W / 2000W
2. Battery: Lithium battery 60V 20AH or 40AH can be disassembled under the seat cushion and pedal
3. Tyre: Tubeless Nylon 18X9.5", 225/40-10 or 215/40-12
4. Overall dimension: 2000 X 1100 X 950mm
5. Seat height: 750mm
6. Net Weight of the whole scooter: 90kgs ~ 100KGS with different battery
6. Max. load: 250kg (550lbs)
7. maximum speed 40 ~ 50KM/H. (25mph ~ 32mph)
8. Max. slope: $\leq 25^\circ$
9. Charger: Input voltage (AC): AC110~240V 50/60Hz, Output: 67.2V 2A Or 3A charging time: 6~ 12 Hours.

B: Parts Lay out:



Steering wheel buttons and instructions:



New multi-function instrument



Remote control anti-theft device use and instructions:



Instructions:

First press the unlock button, and then press the start button twice in a row to start the scooter.

Start button, press it twice in succession to start the machine



Alarm button press once to activate the siren press again to deactivate.



Unlock button to unlock the scooter and disarm the scooter



Lock button When pressed, the wheels will be locked and an alarm will sound.



How to unpack & assemble this product.

For fast assembling, please visit link:

<https://youtu.be/P5bKYBIJ7L4>

Or Scan the QR code below to watch the video

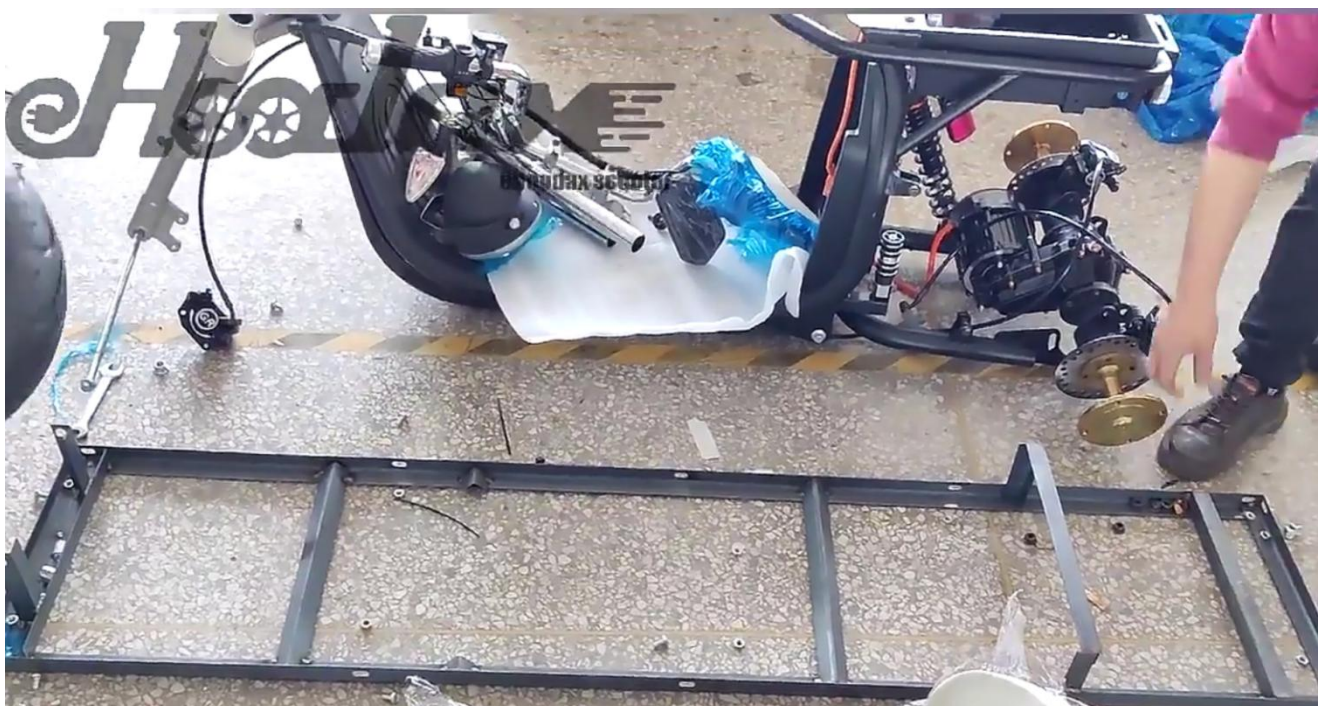


Installation Notes:

1: First remove the carton, remove the iron frame that fixes the scooter, and then tear off the protective film



2: Remove the motor from the iron frame, and then remove the front axle, so that the iron frame is completely separated from the tricycle frame. (PS: Please do not discard the removed front axle)



3: Install the front wheel with the shaft, please note: the shaft needs to pass through the bushing first and then the

front wheel, and the left and right sides of the wheel need to use the bushing.



4: Find the screws from the tool bag to fix the support rod



5: Find the screw rod of the front fender, fix the front fender and tighten the screws.



6: After the two spacers are put on the screw rod, connect the brake caliper and the brake disc.

PS: If the brakes have abnormal noise, you can increase or decrease the shim of one of the screw rods. After the adjustment is completed, the brake disc is in the center of the brake caliper viewed from the side, and the adjustment can be completed without the brake disc scratching the brake caliper.



7: After adjusting the position of the front left and right turn signals, tighten the screws.



8: Install the steering wheel support rod. Put the support rods on both sides into the corresponding brackets, and then tighten the screws to fix the support rods. Put the spacers in first, and then tighten the nuts.



9: Fix the steering wheel, then tighten the screws, and at the same time tighten the plastic plug on the direction support rod.



10: Install the LCD screen and headlight. Use screw rods to connect the LCD screen bracket with the steering wheel bracket and the fixing bracket of the headlight, and then tighten the screws. The lighting position of the headlight can be adjusted according to the headlight bracket.

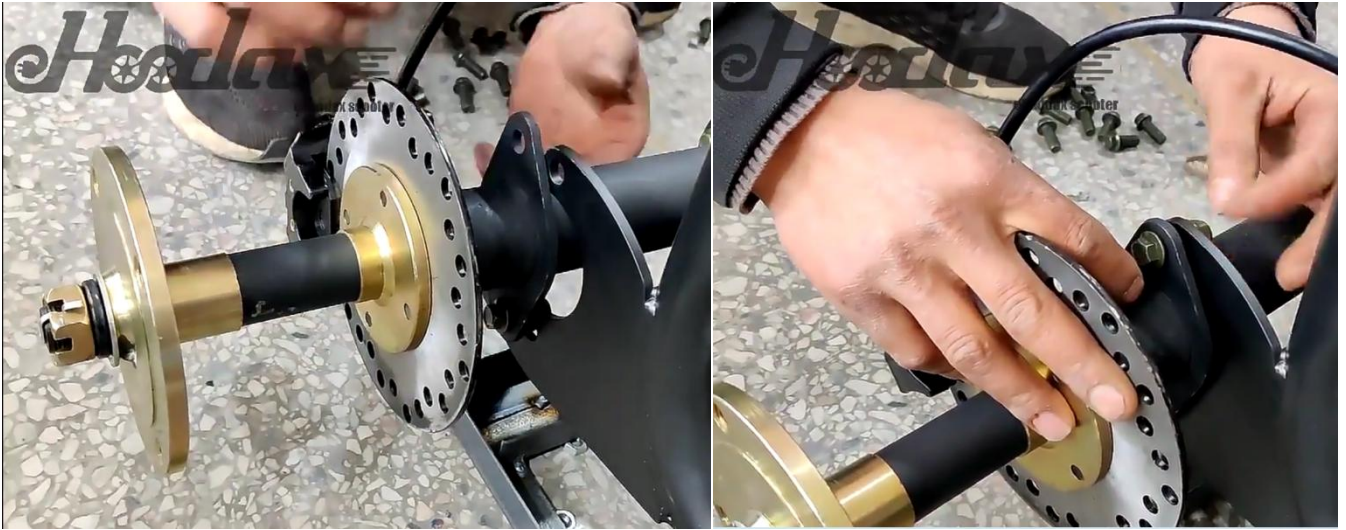


11: Put the motor into the slot of the motor bracket and fix it with screws.

PS: The motor needs to be distinguished from the front and back. If the motor is installed upside down, it cannot be fixed in the slot of the motor bracket.



12: After fixing the motor on the motor bracket, tighten the upper and lower screws and nuts on both sides of the motor.



13: Put the tires on both sides on the motor, and tighten all the screws.



14: Place the fender in the bracket and tighten the screws.

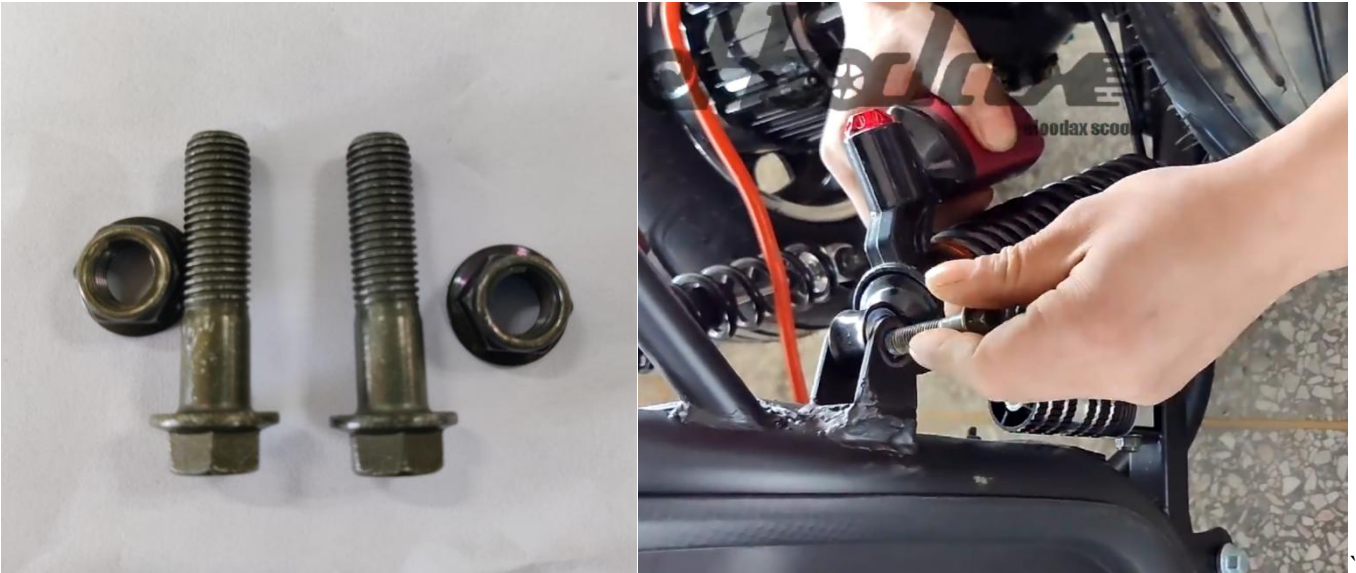




15: Install the installed fender assembly on the motor bracket



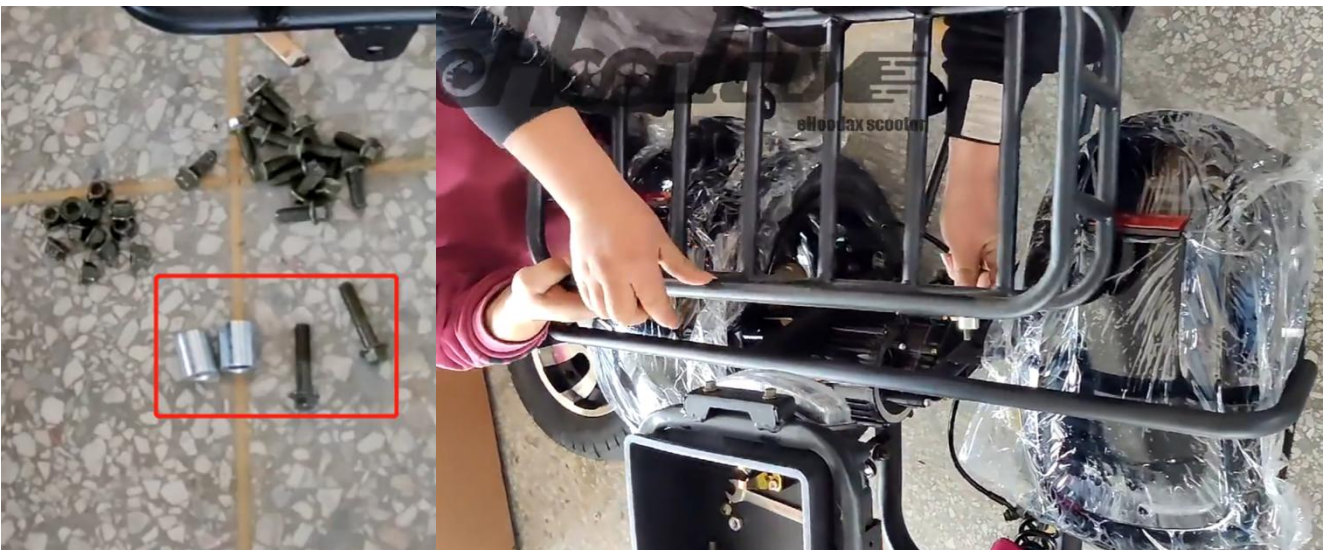
16: Find the screw and nut in the picture and install the spring and shock absorber on both sides of the tricycle



17: Connect the iron frame support frame to the motor, and fix it with screws and nuts, do not tighten it yet.



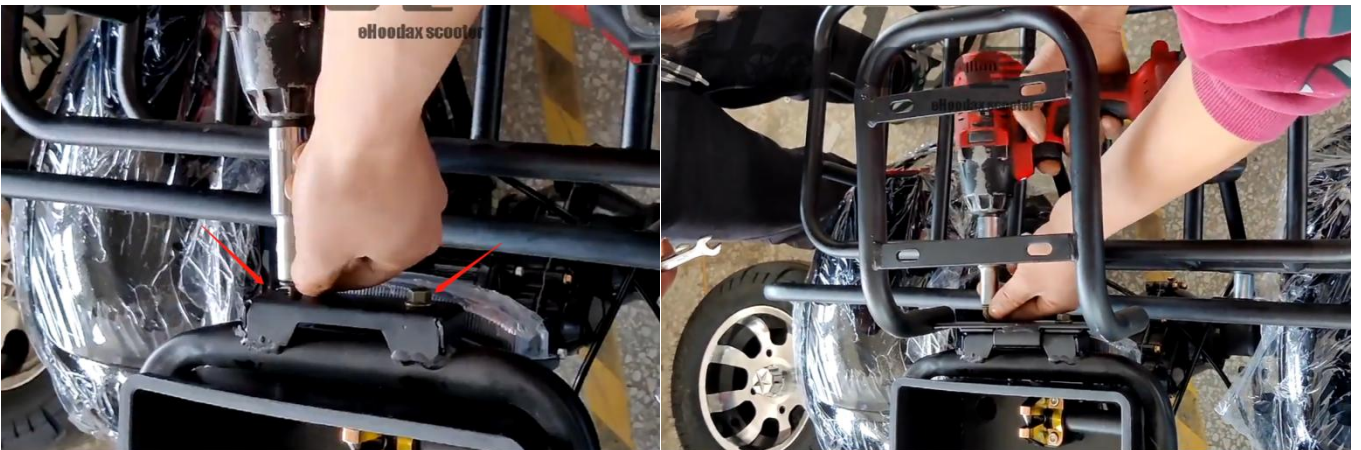
18: Use the spacers and screws in the picture to fix the iron frame on the fender bracket



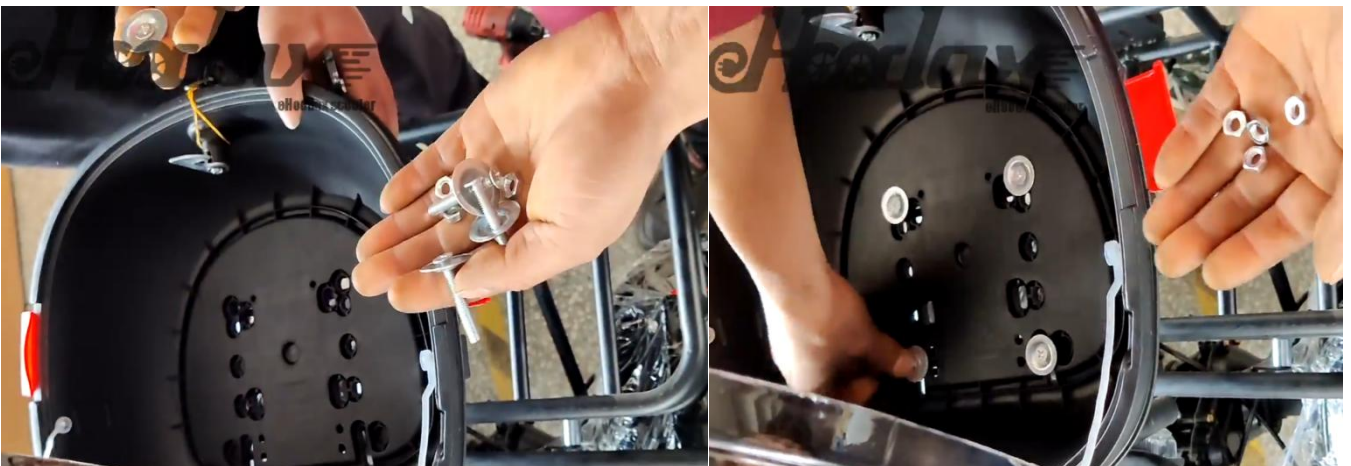
19: Fix item 17 on the bracket on the motor to connect the iron frame, and then tighten all the screws



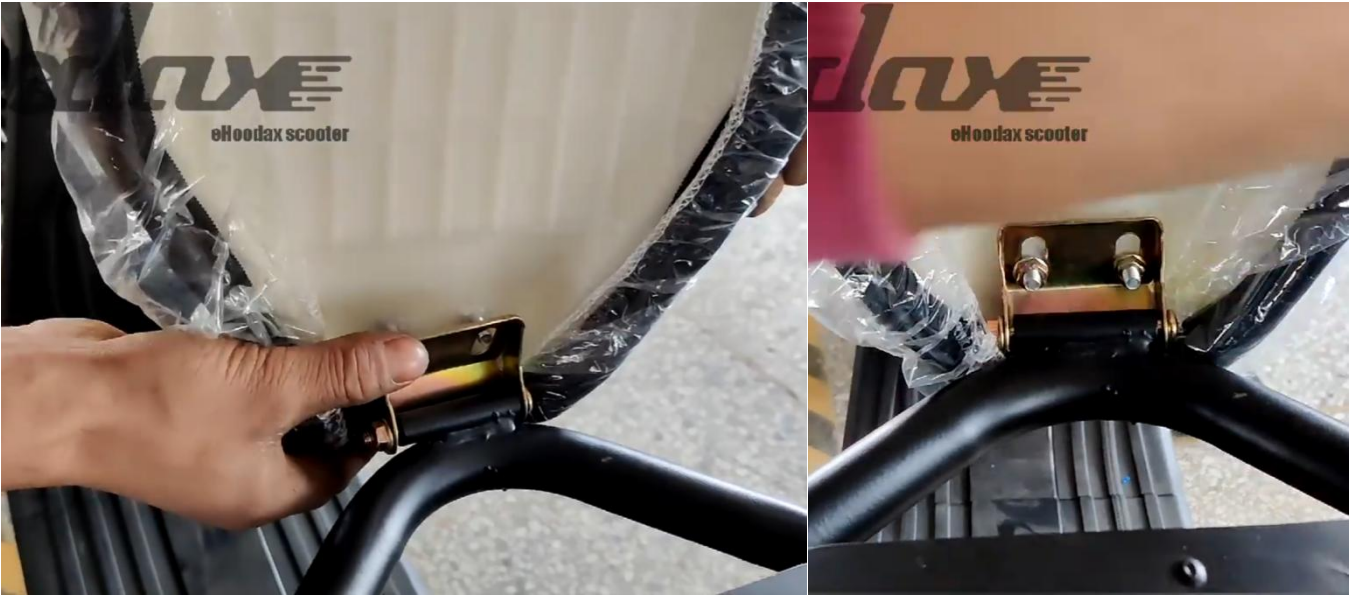
20: Remove the screws at the rear of the tricycle, and then install the trunk bracket.



21: Take out the screws from the trunk and install the trunk



22: Install tricycle seat



23: Install the golf bracket. (Your scooter may not with golf bracket, then no need assemble)





24: Install the battery and plug in the power cord





Pre - Ride check list:

Always perform a pre-ride inspection of your scooter prior to each ride as below list:

Parts Name	Procedure
Power	Turn on the power and check the battery capacity
Tyre	Check the both tyres, add air if necessary and replace tyre if broken or leakage
Brake	Check the brake function: hold and loose brake handle make sure handle works fine. , Check brake-fluid level, if necessary, add DOT 4 or higher brake fluid. Check brake lever free-play, make adjustments and lubricate cable if necessary. Check brake pad wear. If the brake pads are worn out badly, replace pads immediately.
Throttle	Check to make sure the throttle actuates freely through the range. Lubricate throttle cable if necessary. Check throttle free-play. Adjust throttle cable tension if necessary.
Lightings	Check the function of all lights. Clean lenses if necessary.
Switches	Check the function of all switches, make sure they works fine.
Assembly	Check all parts assembly to ensure fasteners are secure and assemblies function properly.
Mirrors	Check the Review Mirror on correct position and no broken not effecting your rear view.

When parking, please pay attention to those vehicles and pedestrians around. After parking it stably, turn the power supply lock rightwards to pull it out and take it down, and lock the scooter with a remote alarm (if include).

Riding Attention:

1. Before starting your vehicle, you should be familiar with all operations and functions of this vehicle. You should have completed the pre-ride inspection, and you should be wearing safety gear.
2. please always keep your body at the center of the cushion to prevent load reduction of the front tyre and danger caused by handlebar vibration.
3. Please observe traffic regulations and drive it safely. Please control the speed within safe speed range .
4. Take more care when driving it in raining or snowy days: danger may occur due to wet ground in raining or snowy days! Thus, you should drive it a low speed and take more care when turning. You must particularly remember that you

do have to brake in advance in raining or snowy days to prevent accidents!

5. Drive it slowly on roads with surface damaged or that paved with gravels.
6. Turn the throttle toward the rider, the scooter will move forward, limit the speed at safe.
7. Turn the turning light left or right when you need to turn left or right

NOT TO DO:

1. Do not lend it to those personnel who are not familiar with or unable to drive it or ask them to drive it. It is dangerous to drive it by one hand or even without hands or drive it when intoxicated.
2. Do not overload: the max. load of this scooter is 250kg(550lbs). The handling feeling of handlebar with load is different from that without load. When many articles are loaded, holding handlebar will vibrate, resulting in danger. The stable load of this scooter is one person, it will be very dangerous to load articles or person at the front pedal.

SAFE Riding Requirement:

Your scooter can provide many years of riding enjoyment. You must take responsibility for your own safety and the safety of others. There are many steps you can take to protect yourself and others while riding. Here are some very important safety precautions:



Wear a Helmet

Rider safety begins with quality head protection. A head injury is one of the most serious injuries that can occur.

Always wear a qualified helmet that is properly buckled.

Wear Riding Apparel

Choose quality gloves, boots, pants, jackets and other riding apparel specifically designed with protective features. Loose clothing can be unsafe when riding your scooter.

Make Yourself Visible

Wear bright, reflective apparel to make yourself more visible to fellow drivers. Position yourself on the road where other drivers can easily see you. Use your turn signals, hand signs, horn and other methods to help others locate you and understand your driving actions.



Not wearing safety apparel increases the chance of serious injury or death in a crash. Be sure you and any passengers always wear helmets and protective gear properly.

Know Your Limits

Ride within the boundaries of your own skill at all times. Do not ride under the influence of drugs or alcohol. Strictly observe all traffic regulations. Always adapt your riding to account for traffic and road conditions.

Road Conditions

Road conditions can vary greatly with weather, water, oil, elevation etc. Your riding stability and braking power are limited by the grip of the tires on the road surface.

When encountering slippery road surfaces, braking distance will increase significantly and riding stability will be reduced.

Reduce vehicle speed and perform all actions in a gradual and deliberate manner to prevent accidents.

Use extreme caution on painted surfaces or metal objects such as manhole covers or train

About registration:

Please check with your local government about registration. We not sure your local laws. But we offer with VIN number and motor numbers.

This product has VIN number on the frame.

Trouble shooting:

Fault	Possible Reason	Suggest Solution
Remoto Control Doesn't work	<ol style="list-style-type: none"> 1. Battery of Remote key use up 2. Sensor or components of remote system error. 	<ol style="list-style-type: none"> 1. Replace the inside battery of Remote Key. 2. Replace the remote key and components directly
Max speed decreased or Speed Governing system Fault	<ol style="list-style-type: none"> 1. Battery voltage too low 2. The throttle handle get stuck or failure to accelerate. 	<ol style="list-style-type: none"> 1. Charge the Battery to Full 2. Replace the Throttle
The motor doesn't work though switch on	<ol style="list-style-type: none"> 1. Battery disconnected no power 2. Throttle Function mistaked. 3. Motor connect line from controller get loose or damaged 4. Motor damaged 	<ol style="list-style-type: none"> 1. Plug in the battery correctly. 2. Replace the throttle. 3. Check the motor wire and connect it correctly again. 4. Replace the motor.
Driving mileage is not enough after charge	<ol style="list-style-type: none"> 1. Air pressure of tyres too low. 2. Low Power or the charger failed to charge. 3. The battery is old or damaged. 4. Too much climbing, great headwind, frequent break and start, heavy load etc. 	<ol style="list-style-type: none"> 1. Fill enough air. 2. Fully charge the battery or replace the charger. 3. Replace the battery 4. Different driving habit leads to different result of mileage, charge the battery to full always.
Charger fails to charge	<ol style="list-style-type: none"> 1. The Socket of charger loosen. 2. The fuse inside the battery box fused. 3. Battery pack's connecting wire falls 	<ol style="list-style-type: none"> 1. Fasten the socket or connect to another. 2. Replace the fuse of battery. 3. Weld connecting wires.
Disc Brake Noise	<ol style="list-style-type: none"> 1. The screw touch the brake plate 	<ol style="list-style-type: none"> 1. Adjust the screw position or lose a bit
Other fault	<ol style="list-style-type: none"> 1. If any fault about controller, inner motor, charger or LCD. 	<ol style="list-style-type: none"> 1. Contact your dealer if you can't handle them and don't know reason. 2. Do not open the parts by yourself for safety risk.

CERTIFICATE OF ORIGIN FOR A VEHICLE

YONGKANG HD INDUSTRY TRADE CO.,LTD

PLACE OF ORIGIN : CHINA PRODUCTION DATE : 10/2024

BRAND : EHOODAX MODEL : CP3

GW : 100KG QUANTITY: 1

CATEGORY : ELECTRIC SCOOTER

PLACE OF ORIGIN: NORTH SIDE OF 5TH FLOOR, BUILDING 2,
NO. 6 BAIFULIN AVENUE, XIALIXI INDUSTRIAL PRODUCTION BASE,
SHIZHU TOWN, YONGKANG CITY, JINHUA CITY, ZHEJIANG PROVINCE

I, THE UNDERSIGNED AUTHORIZED REPRESENTATIVE OF THE COMPANY,
FIRM OR CORPORATION NAMED BELOW, HEREBY CERTIFY THAT THE
NEW VEHICLE DESCRIBED ABOVE IS THE PROPERTY OF THE SAID COMPANY,
FIRM OR CORPORATION AND IS TRANSFERRED ON THE ABOVE DATE AND UNDER
THE INVOICE NUMBER INDICATED TO THE FOLLOWING DISTRIBUTOR OR DEALER.
NAME OF DISTRIBUTOR, DEALER, ETC.



TIME: October 2024

SIGNATURE/STAMP

AFTER SALES SERVICE WARRANTY CARD

If the scooter is damaged during transportation or has any issues with its use or installation, please feel free to contact the following contact information for assistance.

We will reply to your request as soon as possible.

After sales service email: elvis@ehoodax.com

After sales service WhatsApp: 008615305898230

TARJETA DE GARANTÍA DEL SERVICIO POSVENTA

Si el scooter se daña durante el transporte o tiene algún problema con su uso o instalación, no dude en comunicarse con la siguiente información de contacto para obtener ayuda.

Responderemos a su solicitud lo antes posible.

Correo electrónico del servicio posventa: elvis@ehoodax.com

Servicio postventa WhatsApp: 008615305898230

CARTE DE GARANTIE DU SERVICE APRÈS-VENTE

Si le scooter est endommagé pendant le transport ou présente des problèmes lors de son utilisation ou de son installation,

n'hésitez pas à contacter les coordonnées suivantes pour obtenir de l'aide.

Nous répondrons à votre demande dans les plus brefs délais.

Correo electrónico del servicio posventa: elvis@ehoodax.com

Service après-vente WhatsApp: 008615305898230

Give this scooter a five-star rating for your order and send a screenshot of the five-star rating to this email: elvis@ehoodax.com to get one of the following random gifts. Otorgue a este scooter una calificación de cinco estrellas por su pedido y envíe una captura de pantalla de la calificación de cinco estrellas a este correo electrónico: elvis@ehoodax.com para obtener uno de los siguientes obsequios aleatorios.

Donnez à ce scooter une note de cinq étoiles pour votre commande et envoyez une capture d'écran de la note de cinq étoiles à cet e-mail : elvis@ehoodax.com pour obtenir l'un des cadeaux aléatoires suivants.

charger



Lock



scooter bag

